



Quality Products & Sales Inc

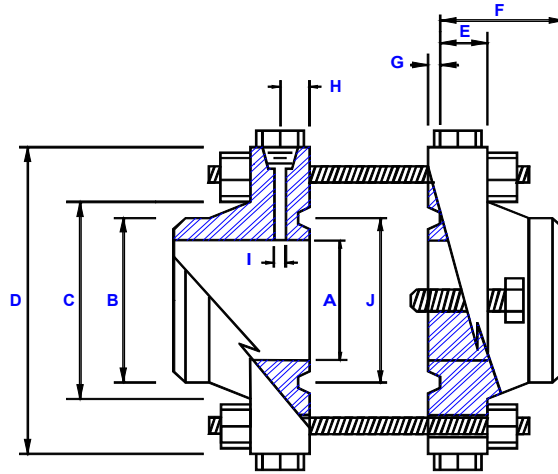
Orifice Metering Division

PO Box 7

Broken Arrow Ok 74013

Local #(918) 251-0115 * Watts #(800) 444-4634 * Fax #(918) 455-1982

2500# RTJWN ORIFICE FLANGE UNION



PIPE SIZE	(A) BORE	POINT OF WELD	HUB AT BASE	OUTER DIAMETER	MINIMUM FLANGE THICKNESS	OVERALL LENGTH NOTE#1	DEPTH OF RING GROOVE	TAP CENTER TO PLATE FACE	PRESSURE TAP HOLE SIZE	PITCH DIAMETER OF GROOVE	DIAMETER OF BOLT CIRCLE	DIAMETER OF HOLES	NUMBER OF HOLES	SIZE OF STUDS	SIZE OF JACKSCREWS	APPROXIMATE WEIGHT
	A	B	C	D	E	F	G	H	I	J						
1	*	1.31	2.50	6.25	1.37	3.50	.250	1.00	.250	2.375	4.25	1.00	4	7/8 X 6-1/4	5/8 X 4	26
1-1/2	*	1.87	3.12	8.00	1.75	4.37	.312	1.00	.250	3.250	5.75	1.25	4	1-1/8X7-1/2	3/4X5-1/2	56
2	*	2.37	3.75	9.25	2.00	5.00	.312	1.00	.375	4.000	6.75	1.12	8	1 X 7-3/4	3/4X5-1/2	84
2-1/2	*	2.87	4.50	10.50	2.25	5.62	.375	1.00	.375	4.375	7.75	1.25	8	1-1/8 X 8-1/2	3/4X5-1/2	104
3	*	3.50	5.25	12.00	2.62	6.62	.375	1.00	.375	5.000	9.00	1.37	8	1-1/4X9-1/2	3/4X6-1/2	188
4	*	4.50	6.50	14.00	3.00	7.50	.437	**	.500	6.187	10.75	1.62	8	1-1/2 X 11	3/4X6-1/2	292
6	*	6.62	9.25	19.00	4.25	10.75	.500	**	.500	9.000	14.50	2.12	8	2 X 14-3/4	3/4X8-1/2	756
8	*	8.62	12.00	21.75	5.00	12.50	.562	**	.500	11.000	17.25	2.12	12	2 X 16-1/2	1 X 9-1/2	1152
10	*	10.75	14.75	26.50	6.50	16.50	.687	**	.500	13.500	21.25	2.62	12	2-1/2X20-3/4	1 X 12-1/2	2136
12	*	12.75	17.37	30.00	7.25	18.25	.687	**	.500	16.000	24.37	2.87	12	2-3/4X22-3/4	1 X 13	3216

NOTE #1 Overall length does not include depth of Ring Groove

* To be determined by customer

** Due to the depth of the Ring Groove the tap hole location exceeds AGA AND API Specifications

MATERIALS: Domestic A105 (C.S.) AND A182 (S.S.)

Other materials and schedules available

HARDWARE:

Stud Bolts: A193 Gr. B7 Steel

Hex Nuts: A194 Gr. 2H Steel

Jackscrew: C1018 Hardened Square Head Screws

Pipe Plugs: Hex Head, Forged Steel

Manufactured to meet

A.G.A Report #3

A.P.I 14.3

ASME SPECIFICATIONS

RTJ Orifice Plates sold separate