



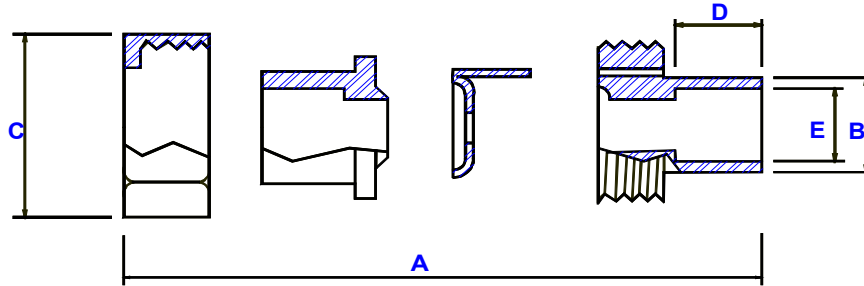
Quality Products & Sales Inc
Orifice Metering Division

PO Box 7

Broken Arrow Ok 74013

Local #(918) 251-0115 * Watts #(800) 444-4634 * Fax #(918) 455-1982

3000# SOCKET-WELD RESTRICTION UNIONS



PIPE SIZE	OVER ALL LENGTH WHEN ASSEMBLED	HUB DIMENSION	HEX NUT DIMENSION (NOTE #1)	SOCKET DEPTH	SOCKET DIAMETER	APPROXIMATE WEIGHT
	A	B	C	D	E	
1/4"	1.71	.92	1.73	.438	.562	.46
3/8"	1.88	1.08	2.02	.500	.695	.66
1/2"	2.04	1.26	2.03	.562	.860	.66
3/4"	2.35	1.50	2.38	.625	1.070	1.24
1"	2.57	1.80	2.77	.625	1.335	1.65
1-1/4"	2.84	2.18	3.31	.688	1.680	2.60
1-1/2"	3.09	2.46	3.70	.750	1.920	3.10
2"	3.46	3.04	4.39	.875	2.411	5.00

NOTE #1: Across Corners

NOTE #2: Stainless Steel units have cupped plates without tabs
 * Flat plates with o-ring gaskets available upon request.

FORGING MATERIALS: Domestic A105 (C.S.) AND A182 (S.S.)

PLATE MATERIAL: A240-316 SS.