



# Quality Products & Sales Inc

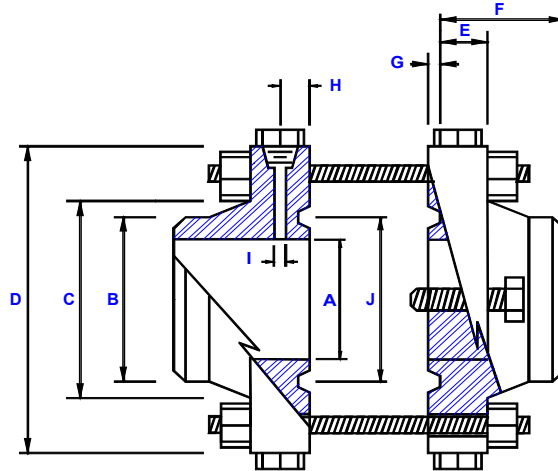
## Orifice Metering Division

PO Box 7

Broken Arrow Ok 74013

Local #(918) 251-0115 \* Watts #(800) 444-4634 \* Fax #(918) 455-1982

### 900# RTJWN ORIFICE FLANGE UNION



PIPE SIZE	(A) BORE	POINT OF WELD	HUB AT BASE	OUTER DIAMETER	MINIMUM FLANGE THICKNESS	OVERALL LENGTH NOTE#1	DEPTH OF RING GROOVE	TAP CENTER TO PLATE FACE	PRESSURE TAP HOLE SIZE	PITCH DIAMETER OF GROOVE	DIAMETER OF BOLT CIRCLE	DIAMETER OF HOLES	NUMBER OF HOLES	SIZE OF STUDS	SIZE OF JACKSCREWS	APPROXIMATE WEIGHT
	A	B	C	D	E	F	G	H	I	J						
1	*	1.31	2.06	5.87	1.25	3.00	.250	1.00	.250	2.00	4.00	1.00	4	7/8X6	5/8 X 4	27
1-1/2	*	1.87	2.75	7.00	1.25	3.25	.250	1.00	.250	2.687	4.87	1.12	4	1X6-1/4	5/8 X 4	41
2	*	2.37	4.12	8.50	1.50	4.00	.312	1.00	.375	3.750	6.50	1.00	8	7/8X6-1/2	5/8 X 4	71
2-1/2	*	2.87	4.87	9.62	1.62	4.12	.312	1.00	.375	4.250	7.50	1.12	8	1X6-3/4	5/8 X 4	85
3	*	3.50	5.00	9.50	1.50	4.00	.312	1.00	.375	4.875	7.50	1.00	8	7/8X6-1/2	3/4X5-1/2	100
4	*	4.50	6.25	11.50	1.75	4.50	.312	1.00	.500	5.875	9.25	1.25	8	1-1/8X7-1/2	3/4X5-1/2	140
6	*	6.62	9.25	15.00	2.18	5.50	.312	1.00	.500	8.312	12.50	1.25	12	1-1/8X8-1/2	3/4X5-1/2	280
8	*	8.62	11.75	18.50	2.50	6.37	.312	1.00	.500	10.625	15.50	1.50	12	1-3/8X9-1/2	1 X 6-1/2	475
10	*	10.75	14.50	21.50	2.75	7.25	.312	1.00	.500	12.750	18.50	1.50	16	1-3/8X10	1 X 6-1/2	675
12	*	12.75	16.50	24.00	3.12	7.87	.312	1.00	.500	15.00	21.00	1.50	20	1-3/8X10-3/4	1 X 6-1/2	930

**NOTE #1** Overall length does not include depth of Ring Groove

\* To be determined by customer

\*\* Due to the depth of the Ring Groove the tap hole location exceeds AGA AND API Specifications

**MATERIALS:** Domestic A105 (C.S.) AND A182 (S.S.)

*Other materials and schedules available*

**HARDWARE:**

Stud Bolts: A193 Gr. B7 Steel

Hex Nuts: A194 Gr. 2H Steel

Jackscrew: C1018 Hardened Square Head Screws

Pipe Plugs: Hex Head, Forged Steel

**Manufactured to meet**

A.G.A Report #3

A.P.I 14.3

**ASME SPECIFICATIONS**

*RTJ Orifice Plates sold separate*